

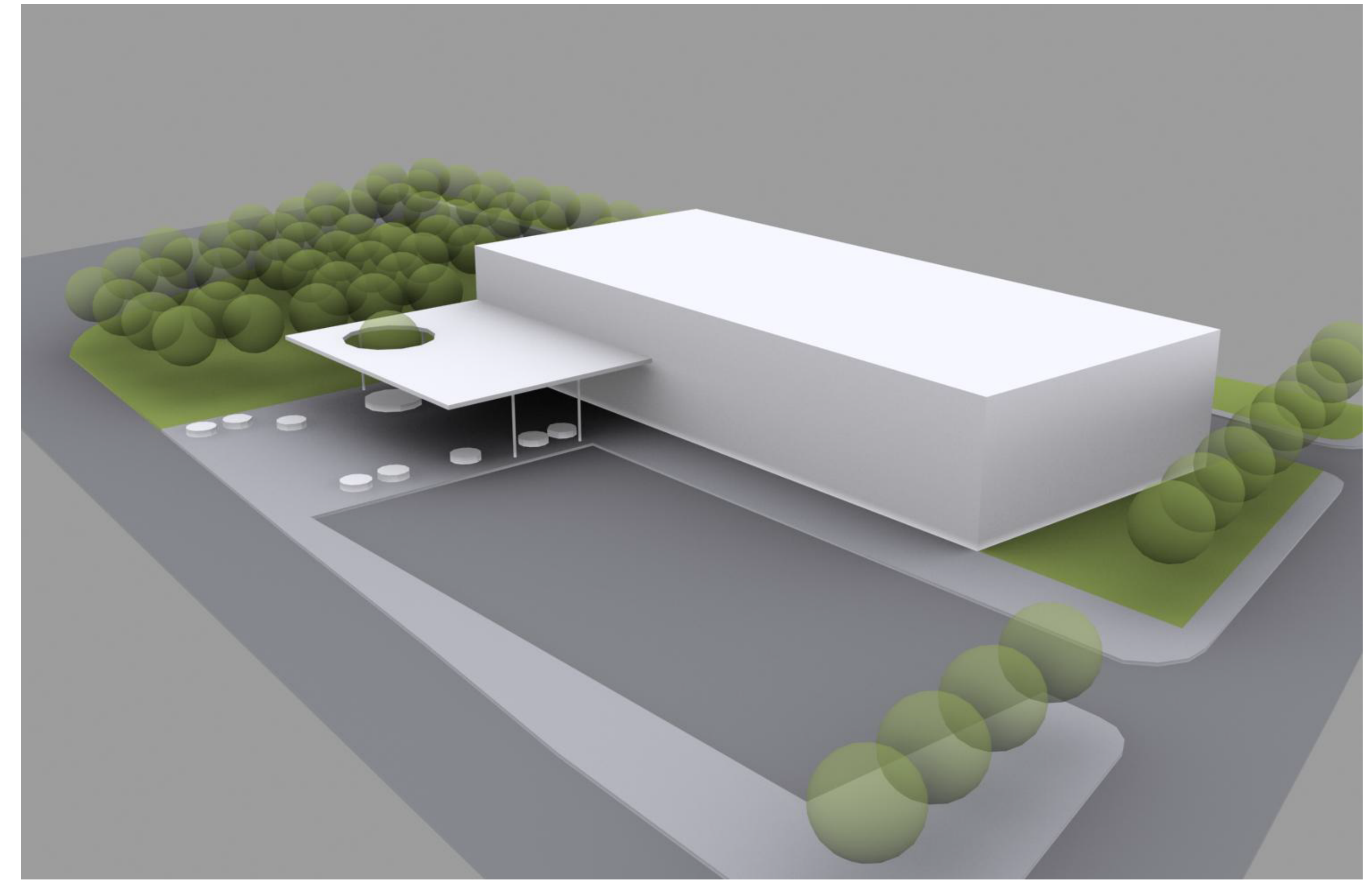
STAVEBNÍ ÚPRAVY KINA PANORAMA, ROŽNOV POD RADHOŠTĚM

KONZULTACE 15. 10. 2012

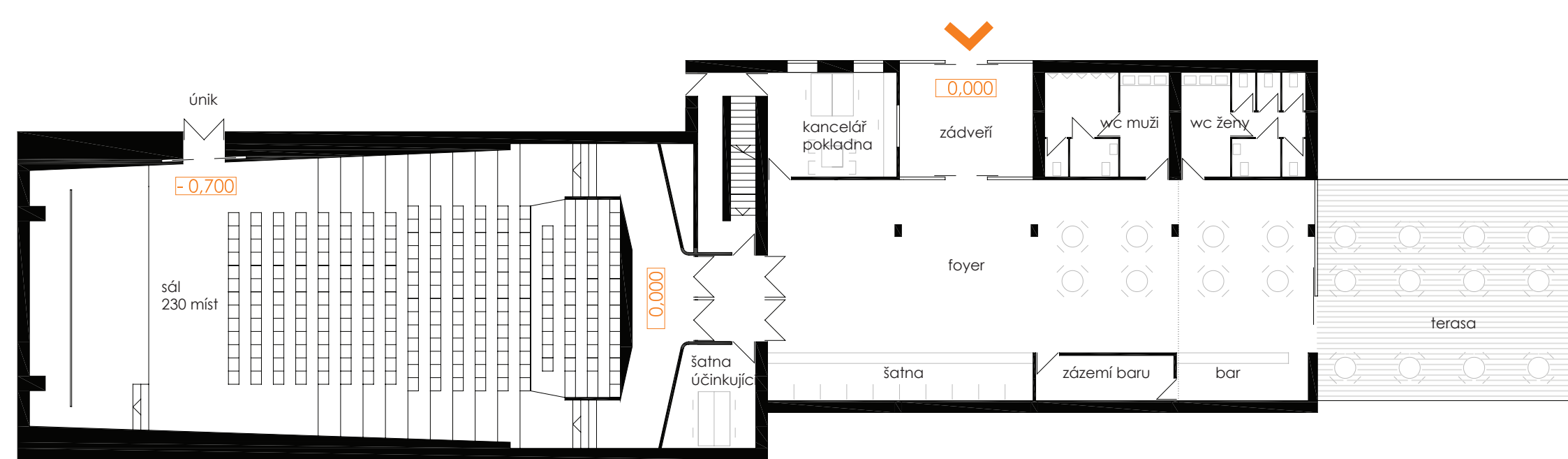


SITUACE 1:500

VARIANTA B



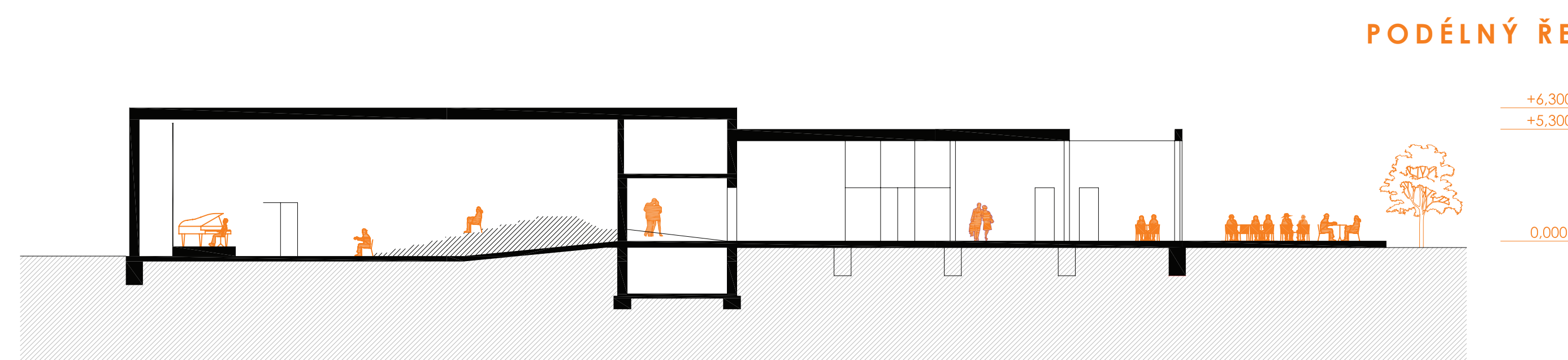
VARIANTA A



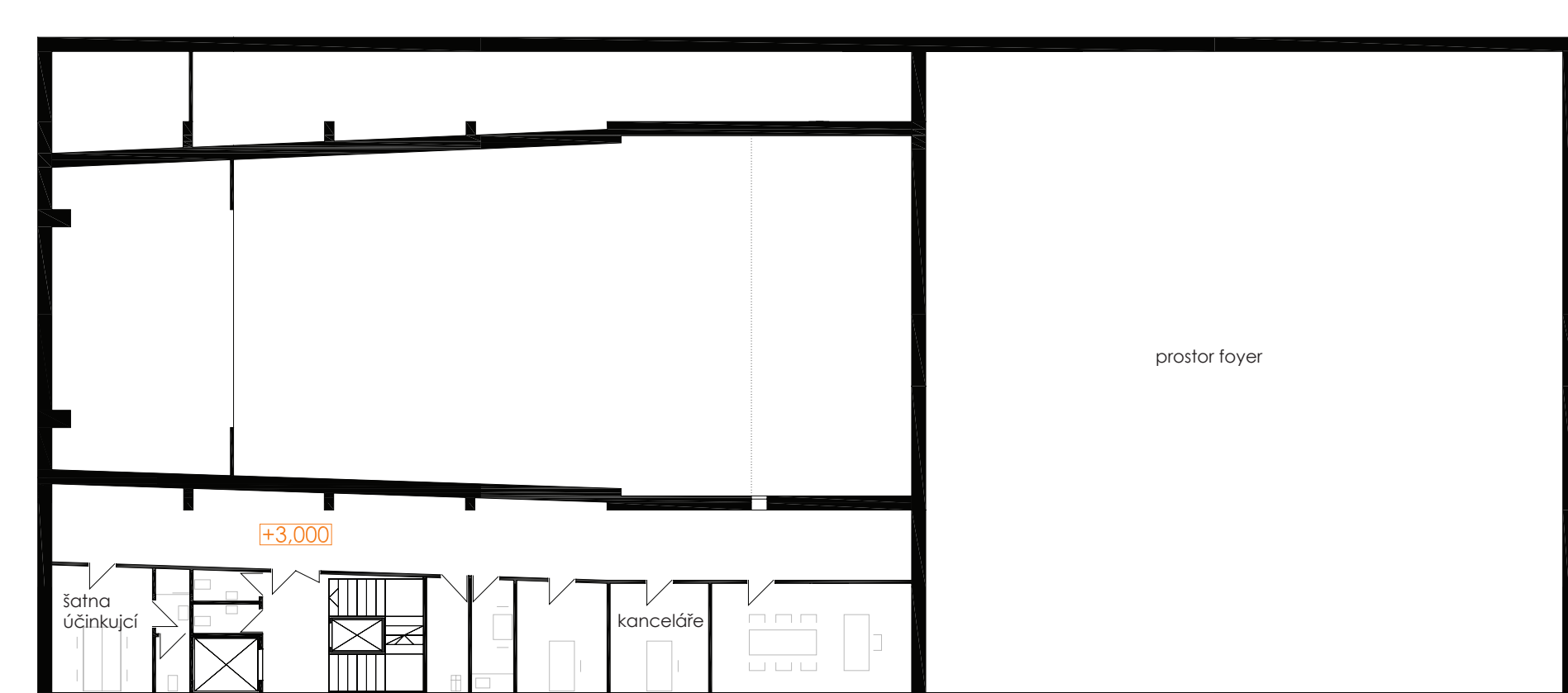
PŘÍZEMÍ 1:200



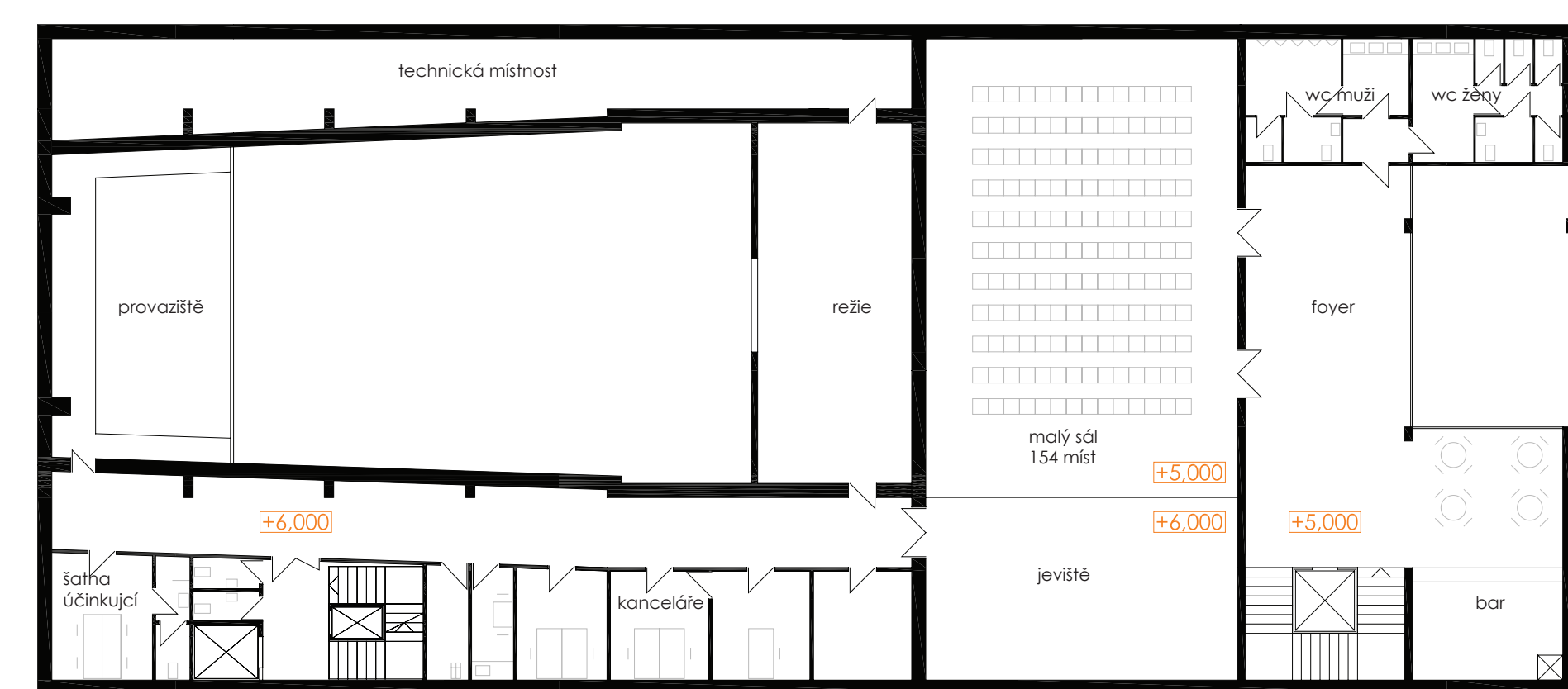
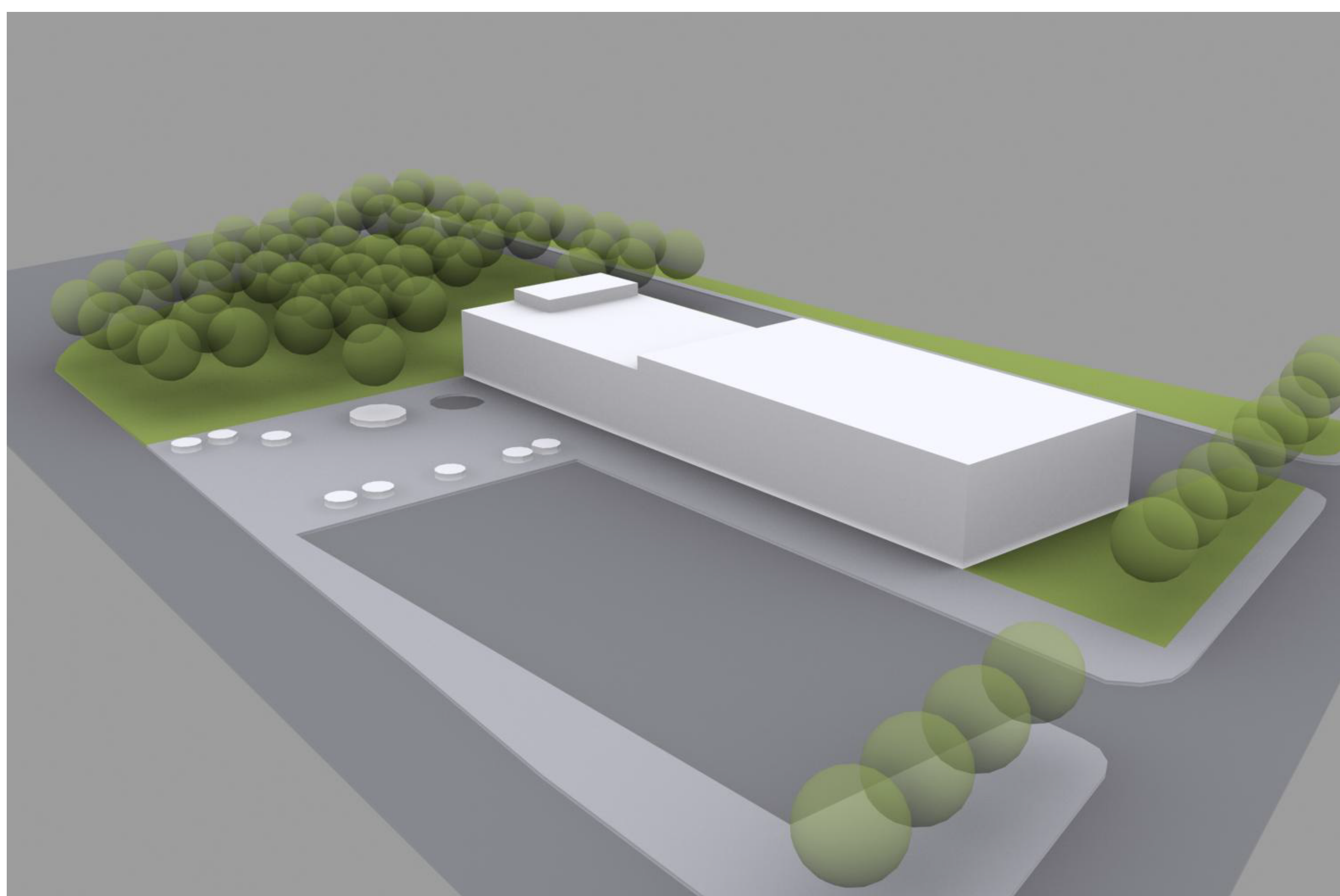
PŘÍZEMÍ 1:200



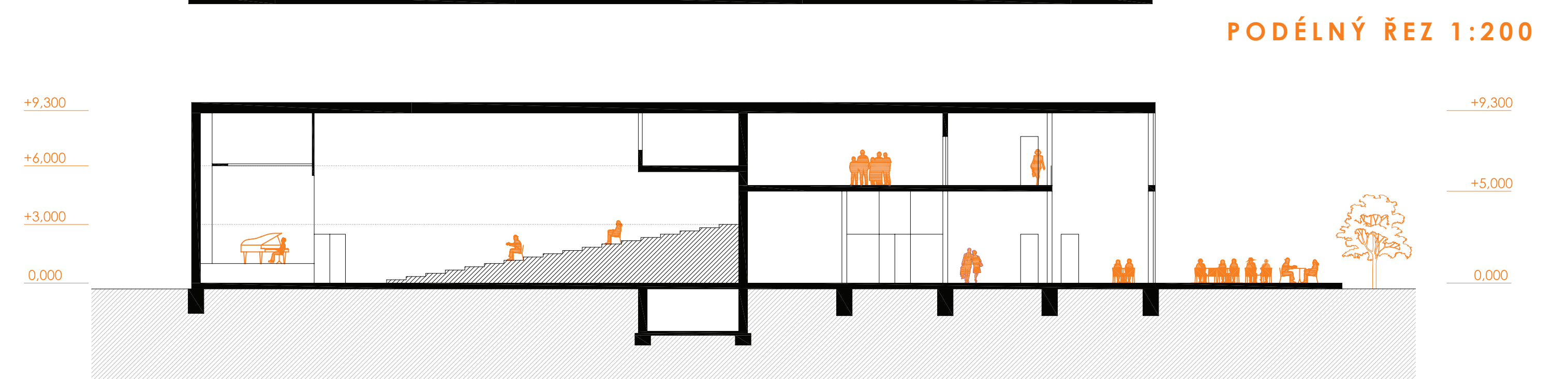
PODÉLNÝ ŘEZ 1:200



MEZIPATRO 1:200



PATRO 1:200



PODÉLNÝ ŘEZ 1:200